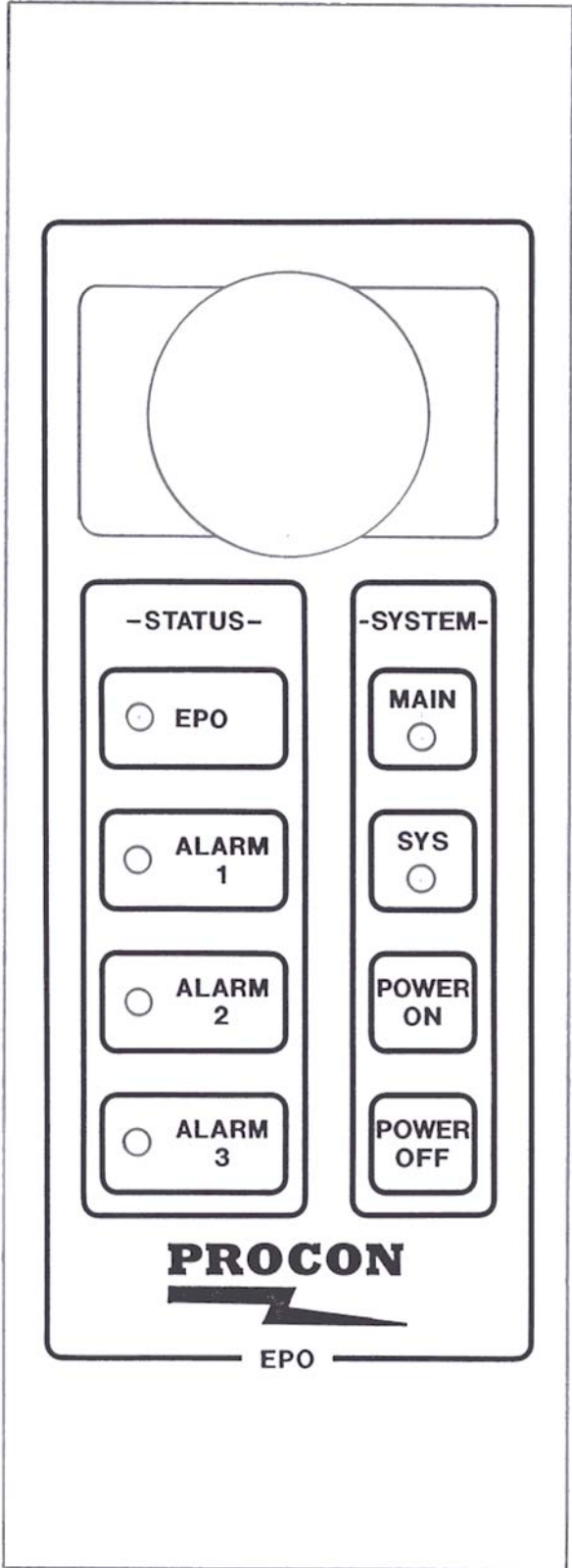


PROCON

**MODEL 900E
EMERGENCY
POWER
OFF**

**3/15/01
Rev 3**



**PROCON
MODEL 900E
TABLE OF CONTENTS**

DESCRIPTION..... 1

LED INDICATORS 2

SWITCHES 3

WARRANTY..... 4

SPECIFICATIONS 5

DRAWINGS

WIRING

 DRAWING #13-090010-10-00 6

DIMENSIONS

 DRAWING #44-090041-10-00 7

i i i **NOTICE** i i i

JPC CONTROLS RESERVES THE RIGHT TO MAKE CHANGES TO ITS PRODUCTS OR SPECIFICATIONS AT ANY TIME, WITHOUT NOTICE, IN ORDER TO IMPROVE THE DESIGN OR PERFORMANCE AND TO SUPPLY THE BEST POSSIBLE PRODUCT. THE INFORMATION IN THIS MANUAL HAS BEEN CAREFULLY CHECKED AND IS BELIEVED TO BE ACCURATE. HOWEVER, NO RESPONSIBILITY IS ASSUMED FOR INACCURACIES.

**PROCON
MODEL 900E
EMERGENCY POWER OFF CONTROLLER**

The Emergency Power Off (EPO) Controller provides a means to switch a main power line. An internal electronic latch turns on a pilot duty relay which in turn turns on the master system contactor. The following are some of the highlights of some of the features of the controller.

- *LOW VOLTAGE CONTROLLER
- *SELF CONTAINED PILOT DUTY MASTER RELAY
- *ON AND OFF SWITCHES
- *LED INDICATORS
- *LARGE (40 MM) EPO OPERATOR
- *PUSH TO LOCK, TWIST RELEASE EPO OPERATOR
- *EPO OPERATOR ON YELLOW BACKGROUND
- *WET STATION ENCLOSURE

LED INDICATORS

Six discrete LEDs are provided to indicate the current system status. They are labeled MAIN, SYS, EPO, ALARM 1, ALARM 2, AND ALARM 3.

MAIN - Indicates that the Main Line Power is on. This LED is wired to be on anytime power is applied to the EPO unit.

SYSTEM - Indicates that the master contactor has been energized. This is an indication that power has been applied to the entire system.

EPO - Indicates that the EPO switch has been depressed and the master system contactor is locked out for that reason.

ALARM 1 - Indicates that the master system contactor is locked out due to a switch opening on the Alarm Circuit 1 EPO input terminals. This circuit may be used to interlock items such as doors or lids. Anytime these items are ajar, it will prevent the system from being energized.

ALARM 2 - Indicated that the second input circuit has a switch opening. Its function is identical to Alarm 1 described above and is provided to allow the splitting of interlock circuits for the ease of identification.

ALARM 3 - Indicates that the third input circuit has a switch opening. Its function is identical to Alarm 1 described above and is provided to allow the splitting of interlock circuits for the ease of identification.

SWITCHES

There are three discrete switches. These are POWER ON, POWER OFF, and the EPO operator.

POWER ON - This switch sets the internal electronic latch which turns on the pilot duty relay.

POWER OFF - This switch, through the internal electronic latch, turns off the pilot duty relay.

EPO - A large (40 mm) EPO switch is provided as a redundant power off switch. This push to lock-twist release switch operates an independent set of contacts that deactivates the pilot duty relay. If the system is shut down by this switch, the turn on sequence is to un-twist the EPO actuator and then depress the Power On switch.

MANUAL REVISIONS

<u>Revision #</u>	<u>Program #</u>	<u>Engineering #</u>	<u>Revisions Made</u>
Rev 0	N/A	DT900E	Origination
Rev 1	N/A	DT900E	Corrected error in Relay specification
Rev 2	N/A	DT900E	Added drawings
Rev 3	N/A	DT900E	Manual formatting

LIMITED WARRANTY

WARRANTY: JPC CONTROLS WARRANTS ITS NEW PRODUCTS TO BE FREE FROM DEFECTS IN MATERIALS AND WORKMANSHIP UNDER THE SERVICE FOR WHICH THEY ARE INTENDED. THIS WARRANTY IS EFFECTIVE FOR TWELVE MONTHS FROM THE DATE OF SHIPMENT.

EXCLUSIONS: THIS WARRANTY IS **IN LIEU OF** ANY OTHER WARRANTY EXPRESSED OR IMPLIED, INCLUDING, BUT NOT LIMITED TO ANY IMPLIED WARRANTY OF **MERCHANTABILITY** OR FITNESS FOR A PARTICULAR PURPOSE.

JPC CONTROLS IS NOT LIABLE FOR ANY INCIDENTAL OR CONSEQUENTIAL DAMAGES.

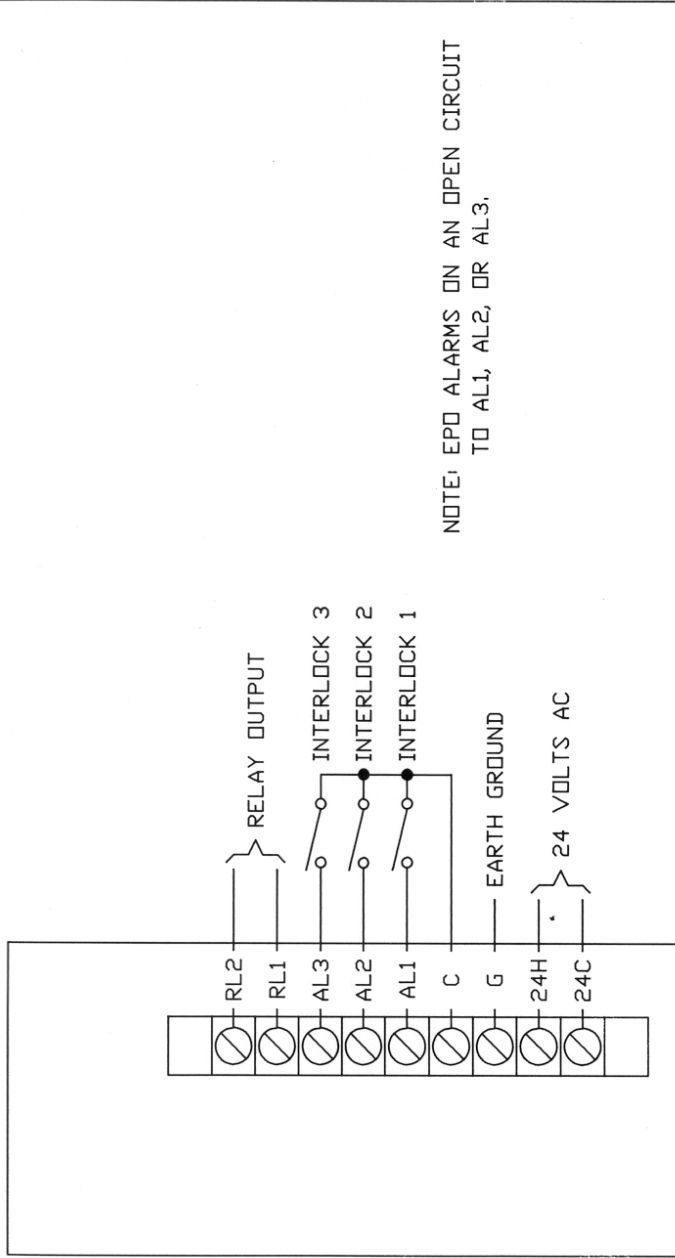
NO PERSON OTHER THAN AN OFFICER IS AUTHORIZED TO GIVE ANY OTHER WARRANTY OR ASSUME ANY LIABILITY.

REMEDIES: THE PURCHASER'S SOLE AND EXCLUSIVE REMEDY SHALL BE: (1) THE REPAIR OR REPLACEMENT OF DEFECTIVE PARTS OR PRODUCTS, WITHOUT CHARGE. (2) AT THE OPTION OF **JPC CONTROLS**, THE REFUND OF THE PURCHASE PRICE.

SPECIFICATIONS

**MODEL 900E
EPO**

DISPLAY	Six discrete LEDs (Red)
OPERATING RANGE	0-50 Degrees C
STORAGE RANGE	-40 to 60 Degrees C
CONSTRUCTION	Enclosure - Kydex, Black Face - Lexan, Back printed
SIZE	8.25 x 3 x 6.0 inches (HxWxD) 210 x 76 x 152mm
WEIGHT	≤ 2 Lbs. (0.9 kg)
CONNECTION	Rear, Screw-Type, 3/8 Inch Centers
OUTPUT	Relay, Form A Contacts (N/O-C), 5 Amps, 24 VAC
POWER	3 VA, 24 VAC ±10%, 50/60 HZ



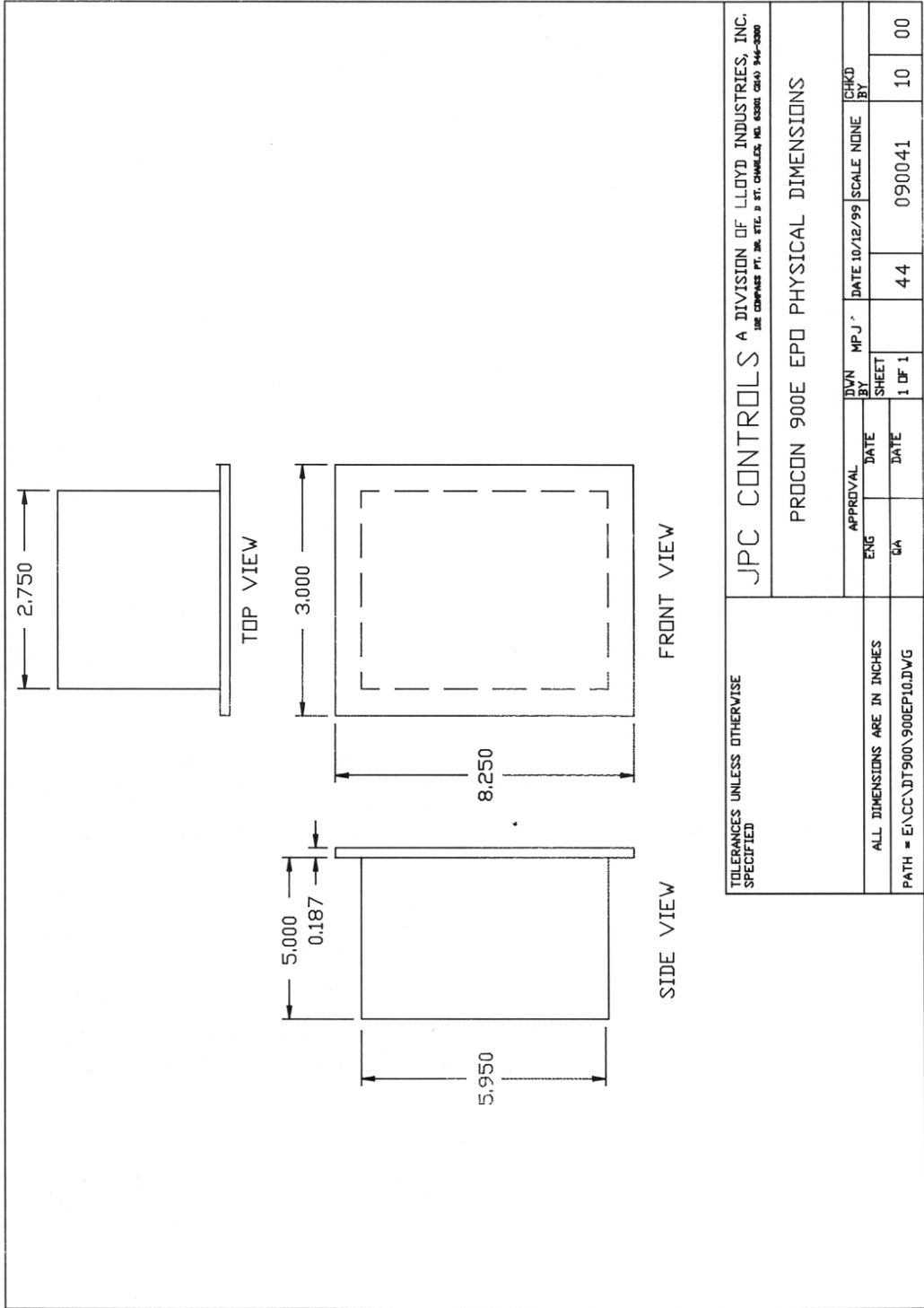
NOTE: EPD ALARMS ON AN OPEN CIRCUIT TO AL1, AL2, OR AL3.

TOLERANCES UNLESS OTHERWISE SPECIFIED

JPC CONTROLS A DIVISION OF LLOYD INDUSTRIES, INC.
100 COMPASS PT. DR. STE. B ST. CHARLES, MO. 63001 CISO 944-3000

PROCON DT900E EPD REAR PANEL

APPROVAL		DN	MPJ	DATE	9/28/99	SCALE	NONE	CHKD	
ENG	GA	BY	SHEET	DATE				BY	
ALL DIMENSIONS ARE IN INCHES		1 DF1		13	090020	10	00		
PATH = E:\CC\DT900\900E\B10.DWG									



TOLERANCES UNLESS OTHERWISE SPECIFIED		JPC CONTROLS A DIVISION OF LLOYD INDUSTRIES, INC. <small>THE COMPASS PT. DR. BLDG. 3 ST. CHARLES, MO. 63301 (314) 344-5300</small>	
PROCCIN 900E EPO PHYSICAL DIMENSIONS			
APPROVAL	DN	DATE	CHKD
BY	BY	10/12/99	BY
ENG	MPJ	SCALE	NONE
GA	1 OF 1	44	090041
ALL DIMENSIONS ARE IN INCHES			10 00
PATH = E:\ACC\DT900\900EPI0.DWG			